

Coastal Storm Potential

Event Date/Time:

11/12/2009-11/14/2009

Today through Saturday

National Weather Service
Newport/Morehead City, NC

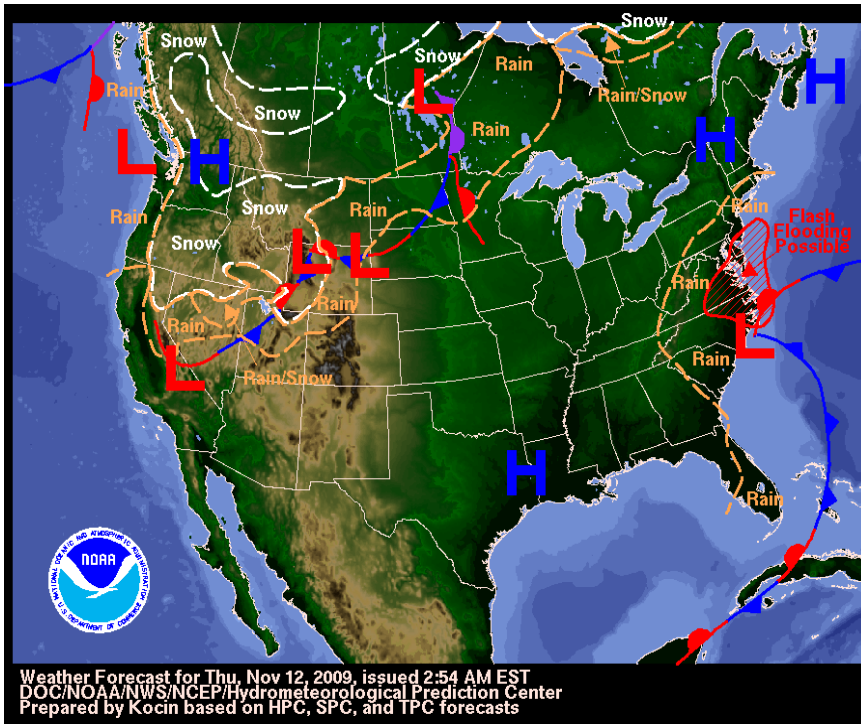
Coastal Storm

- Remnants of Ida, coupled with strong high pressure to the north will produce strong winds, coastal flooding especially at times of high tide, along with high surf through Saturday.
- Storm total rainfall of 4-9" area-wide has caused areas of localized fresh water flooding. Heavy rainfall area moving into north and northeastern counties through this afternoon. An additional 2 to 3 inches of rain is possible especially across the northern areas.

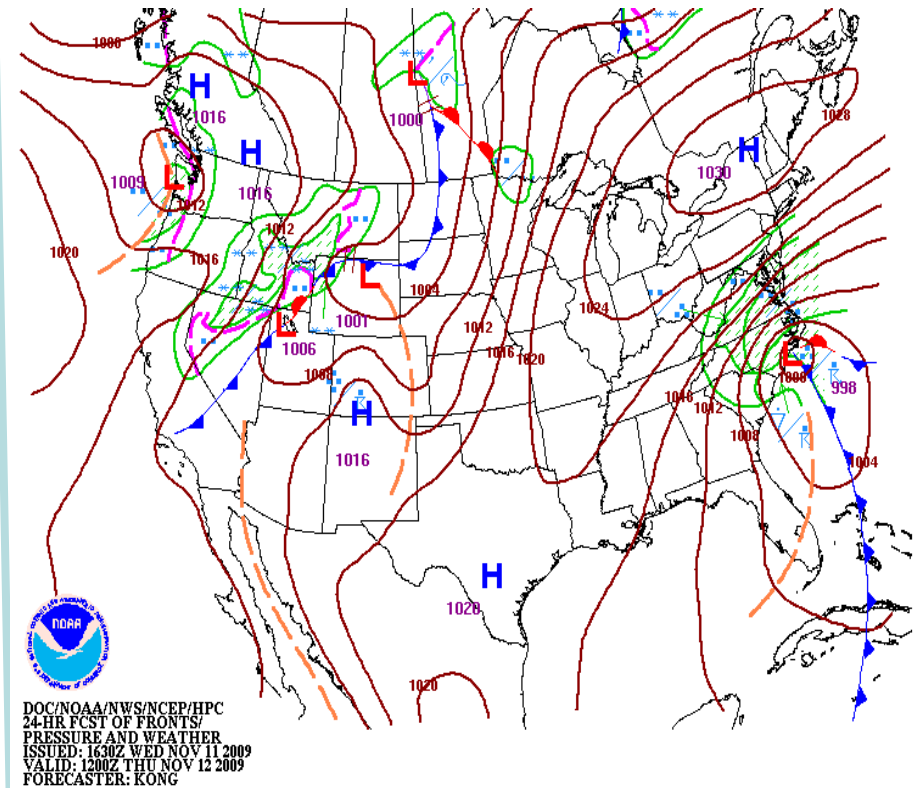
Current Watches/ Warnings/ Advisories in Effect

- Gale Warnings for all coastal waters and sounds, except Small Craft Advisory south of Ocracoke and Pamlico Sound .
- Coastal Flood Warning for Outer Banks Dare county.
- Coastal Flood Advisory for Carteret, Craven, Pamlico, and Beaufort , and Tyrrell counties.
- Flood Watch continues for Mainland Hyde, Mainland Dare, Beaufort, Pamlico, Pitt, Martin, Tyrrell, and Washington counties through this afternoon. An additional 2 to 3 inches of rain is possible across these counties.
- High Wind Warning for Outer Banks Dare county.
- Wind Advisory for Mainland Dare, Washington and Tyrrell counties through this afternoon.
- High Surf Advisory from Cape Lookout to Hatteras Inlet.

Storm Track



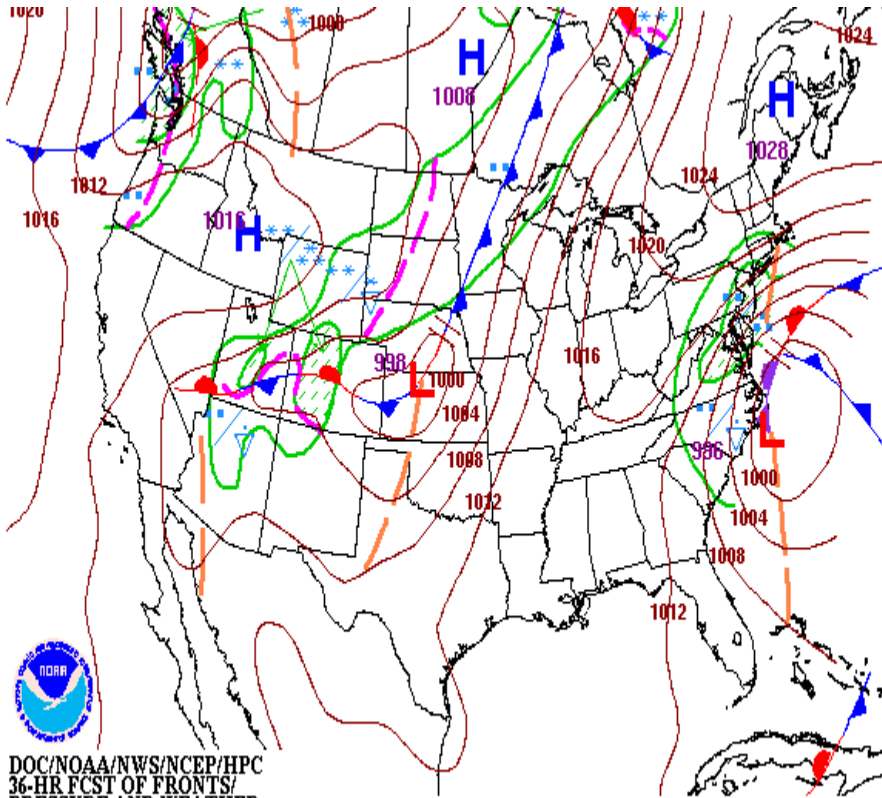
Current



7 pm Tonight

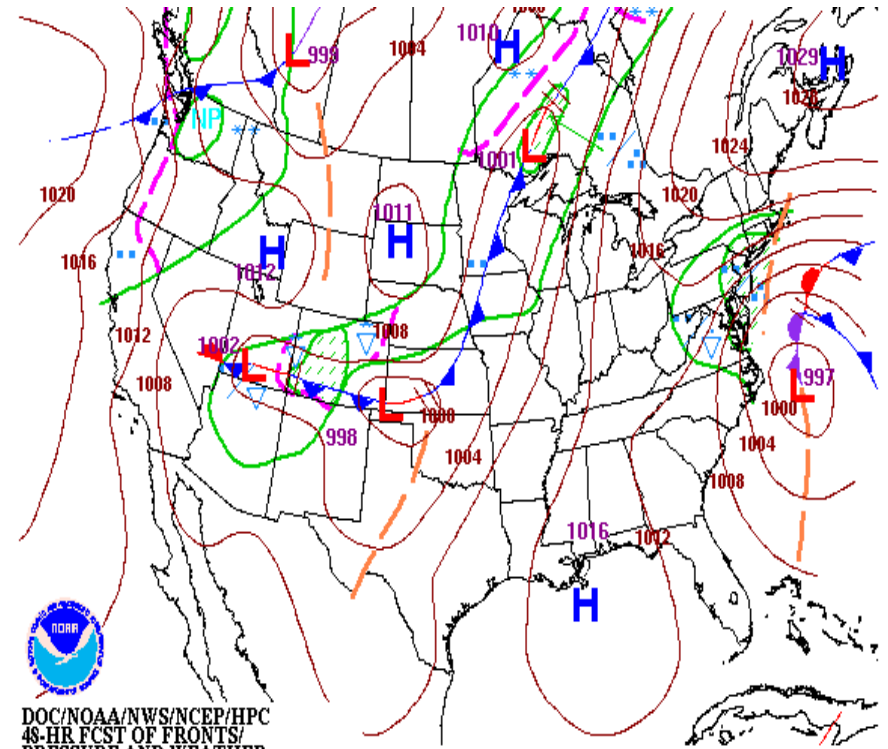
Low pressure will slowly move along the southeast NC through this afternoon as an upper level trough moves in from the northwest. Gusty winds will continue along the coast through this afternoon. Flooding potential exists for Beaufort, Martin, Mainland Hyde, Mainland Dare, Washington and Tyrrell counties.

Storm Track



DOC/NOAA/NWS/NCEP/HPC
36-HR FCST OF FRONTS/
PRESSURE AND WEATHER
ISSUED: 0644Z THU NOV 12 2009
VALID: 1200Z FRI NOV 13 2009
FORECASTER: COLLINS

7 am Friday

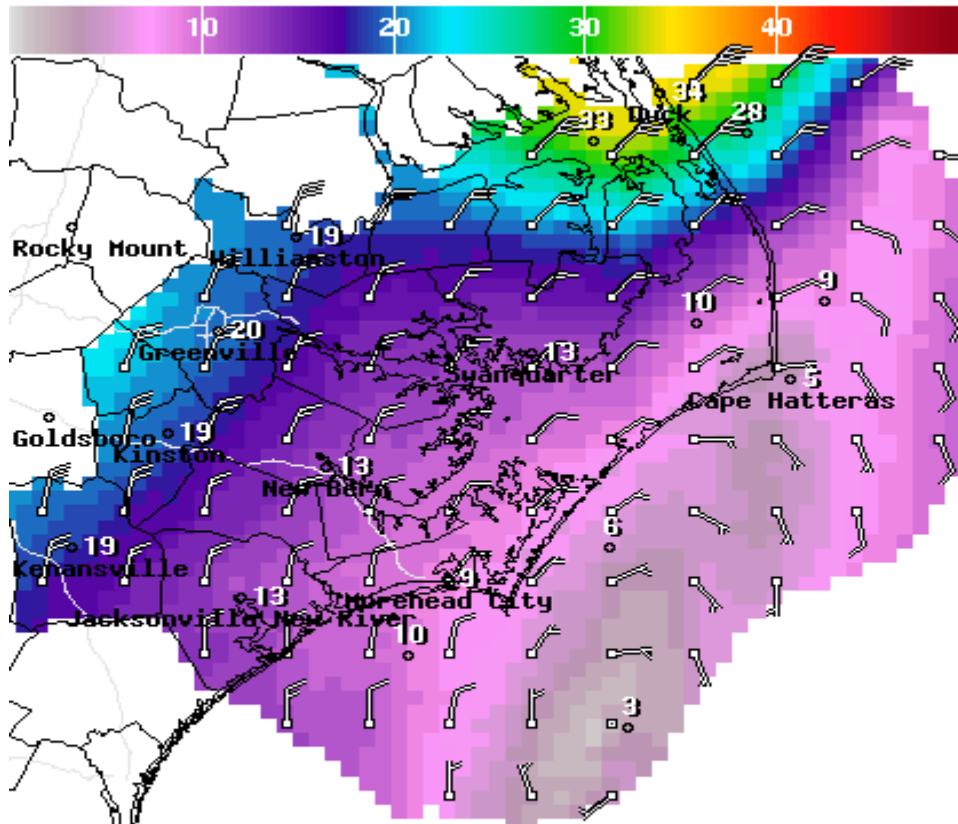


DOC/NOAA/NWS/NCEP/HPC
48-HR FCST OF FRONTS/
PRESSURE AND WEATHER
ISSUED: 0644Z THU NOV 12 2009
VALID: 0000Z SAT NOV 14 2009
FORECASTER: COLLINS

7 pm Friday night

The low will move to a position just off the Outer Banks early Friday then finally will slowly drift further offshore Friday night. This slow movement will compound the coastal flooding impacts and keep seas in the double digits entering into the weekend, especially over the Northern Outer Banks.

Winds



The strongest winds will affect the Northern Outer Banks and Albemarle Sound Regions through this afternoon with NE winds of 25 to 35 mph with gusts to near 40 mph. Over the remainder of Eastern North Carolina, winds will gradually diminish through the afternoon hours.

WindSpd(kts) & WindDir For Thu Nov 12 2009 4PM EST

(Thu Nov 12 2009 21Z)

NWS Newport/Morehead City, NC

Graphic Created Nov 12 4:36AM EST



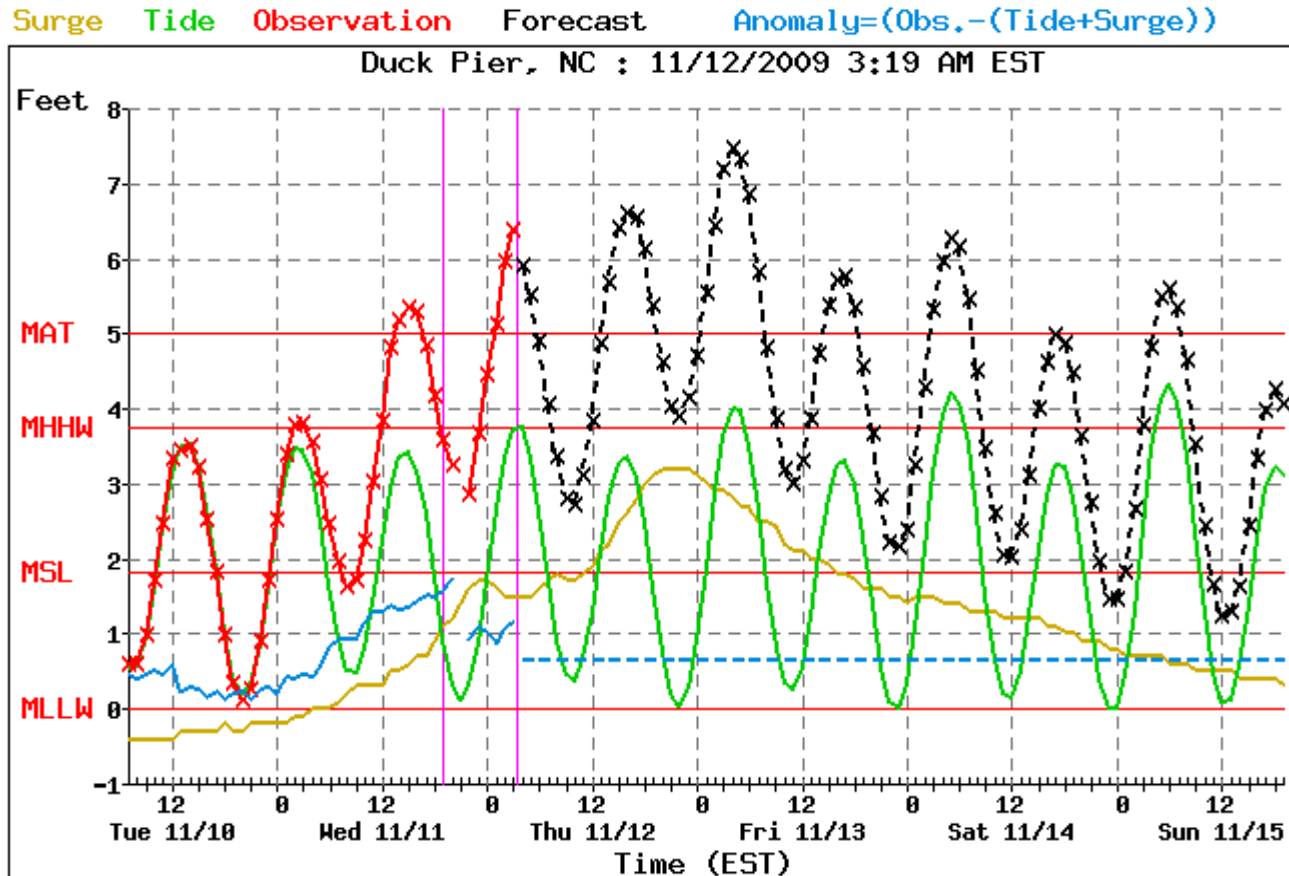
Forecast Winds 4 pm Thursday

Coastal Flooding

Water levels of 1-2 feet or more above normal can be expected tonight into Friday over Down East Carteret county, Craven, Pamlico, Beaufort, and Tyrrell counties.

Along the Outer Banks, along with high breaking waves and overwash, the extratropical storm surge will be 3 to 4 feet. Significant flooding along coastal sections from Hatteras North is possible. By Friday, astronomical tides will begin to build again, which will add to the coastal flooding impacts.

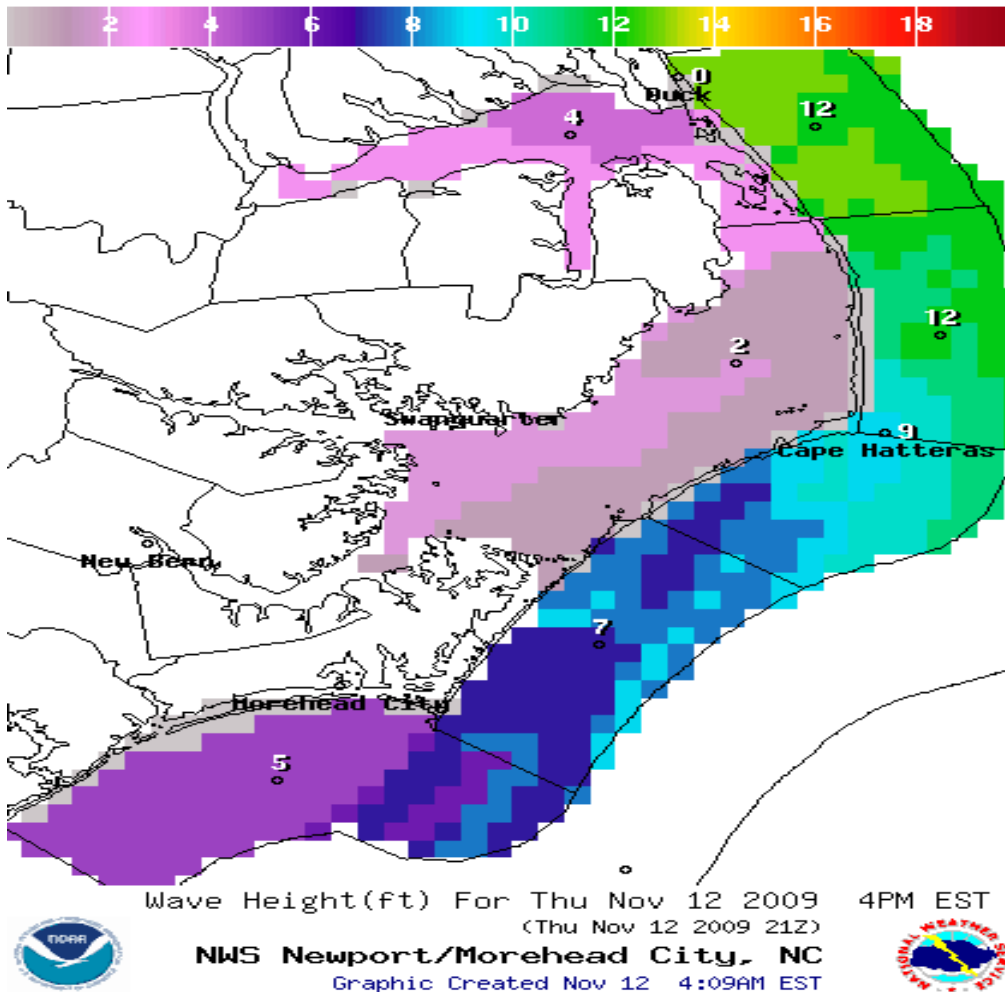
Extratropical Storm Surge Model



Flooding usually begins when levels reach between 6 and 7 feet.

Water level forecasts expected to rise to 2 to 4 feet above normal along the Northern Outer Banks through Saturday. The highest levels are expected late Thursday night into early Friday morning.

Waves



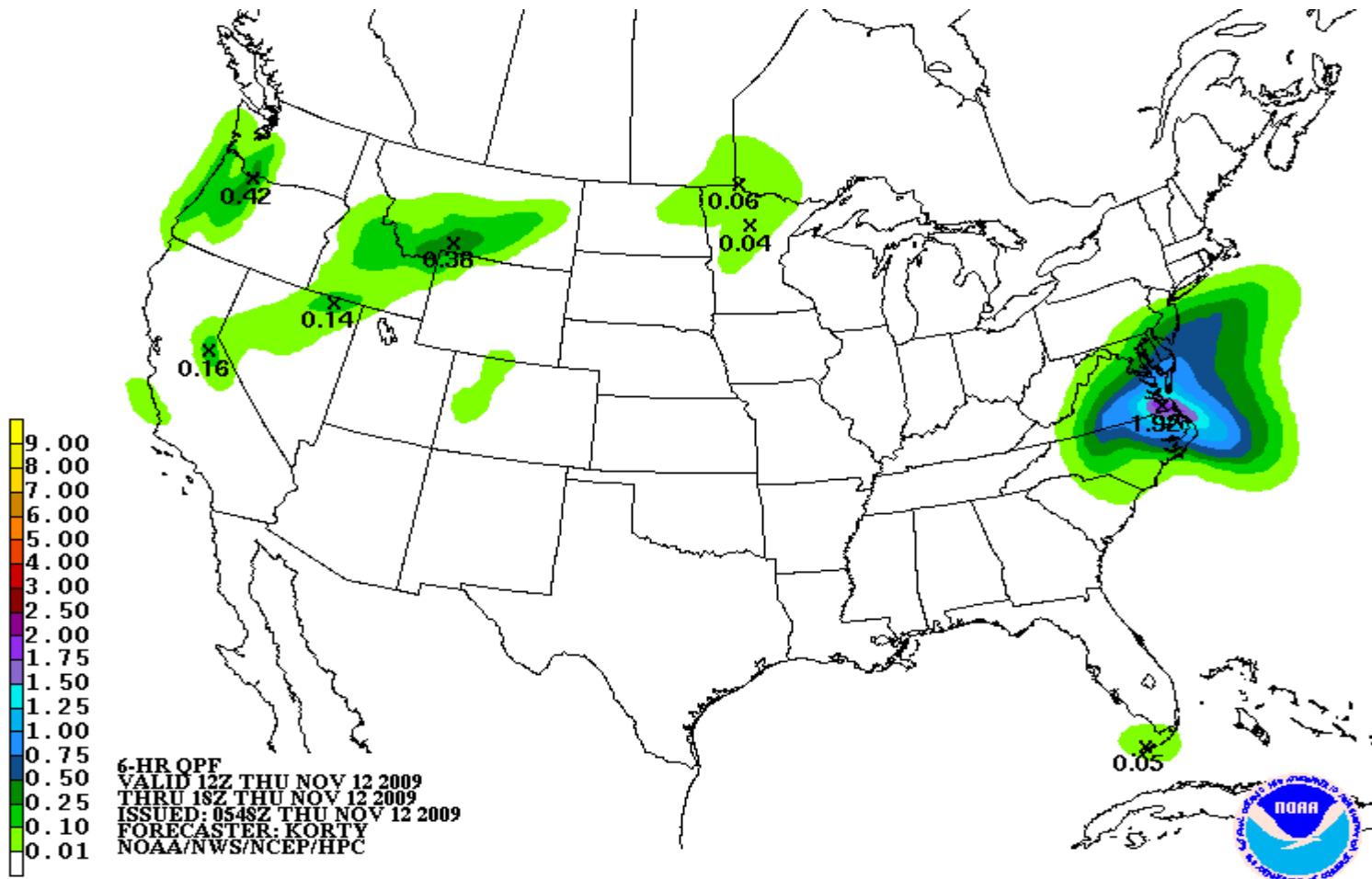
Seas through this afternoon are expected around 10-15 feet, highest along northern waters. The long northeast fetch through Friday afternoon will drive high seas towards the northern OBX.

Breakers could build as high as 8 to 10 feet generating high surf and dangerous rip currents.

By the weekend, high pressure builds over the area and seas will begin to subside.

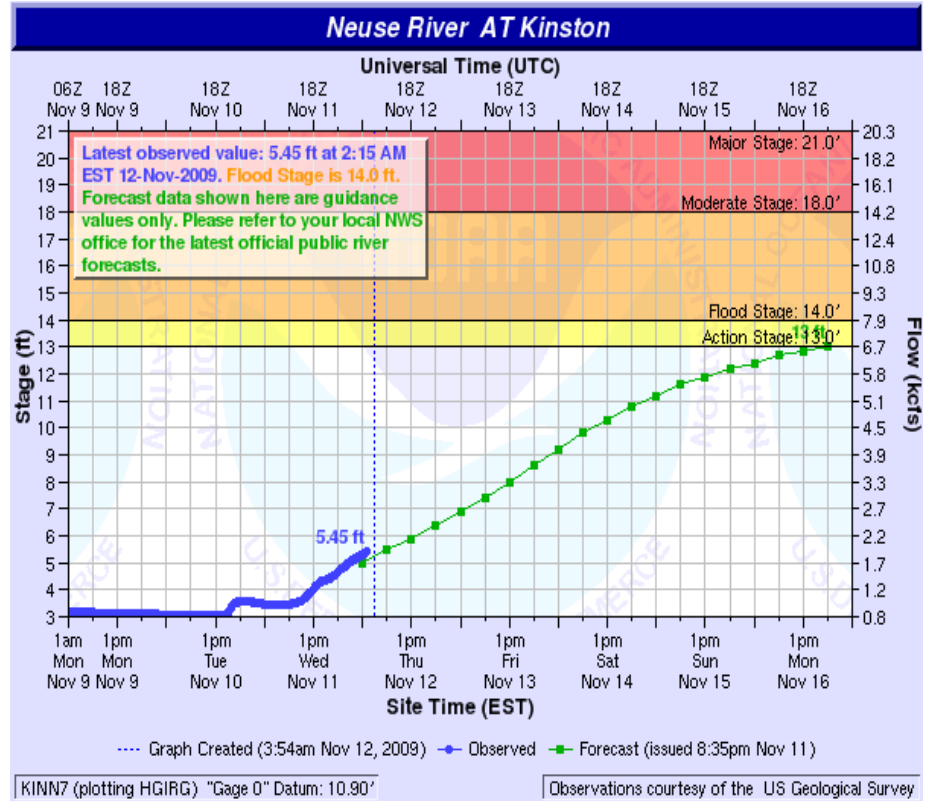
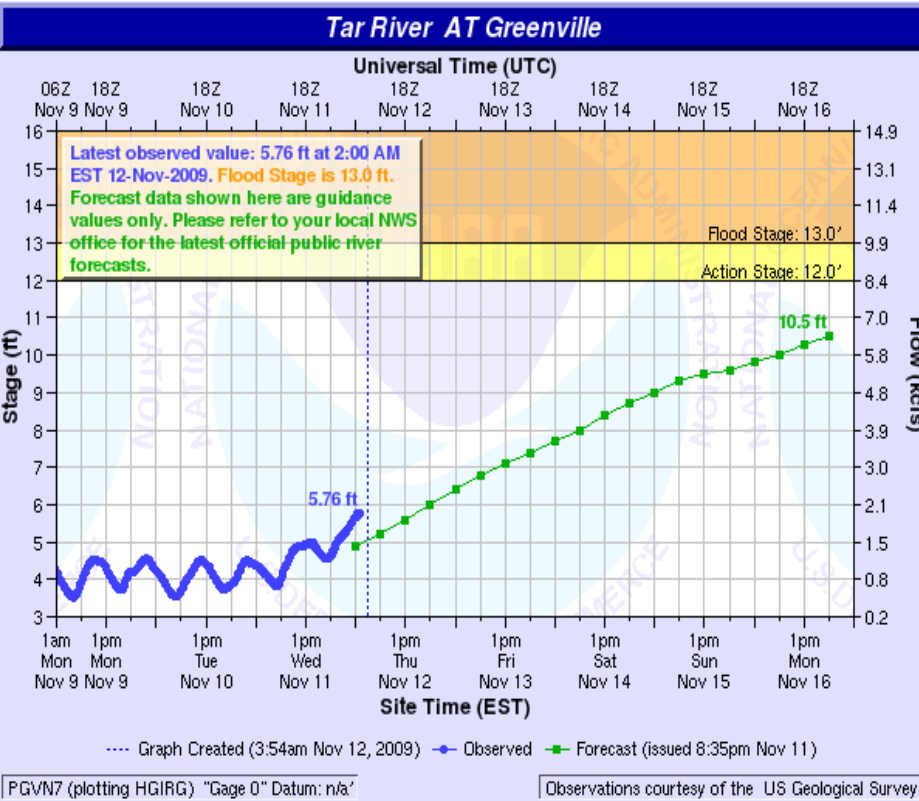
Forecasted seas by This Afternoon at 4 pm (10-12 ft off OBX)

Additional Rainfall Totals



The bulk of the heavy rainfall will move north into NE North Carolina and SE Virginia through this afternoon.

River Levels



River Levels are expected to rise over the next several days, but are expected to remain below flood stage at this time.

John Cole
(252) 223-5122 x2
john.cole@noaa.gov

Forecaster on Duty
252-223-5122 x5

References

NWS Newport/Morehead City
<http://www.erh.noaa.gov/mhx/>

Severe Weather Outlook
<http://www.spc.noaa.gov/products/outlook/>

Rainfall Forecasts (QPF)
<http://www.hpc.ncep.noaa.gov/qpf/qpf2.shtml>