

# Coastal Storm Potential

**Event Date/Time:**

**11/11-13/2009**

**Today through Friday**

National Weather Service  
Newport/Morehead City, NC

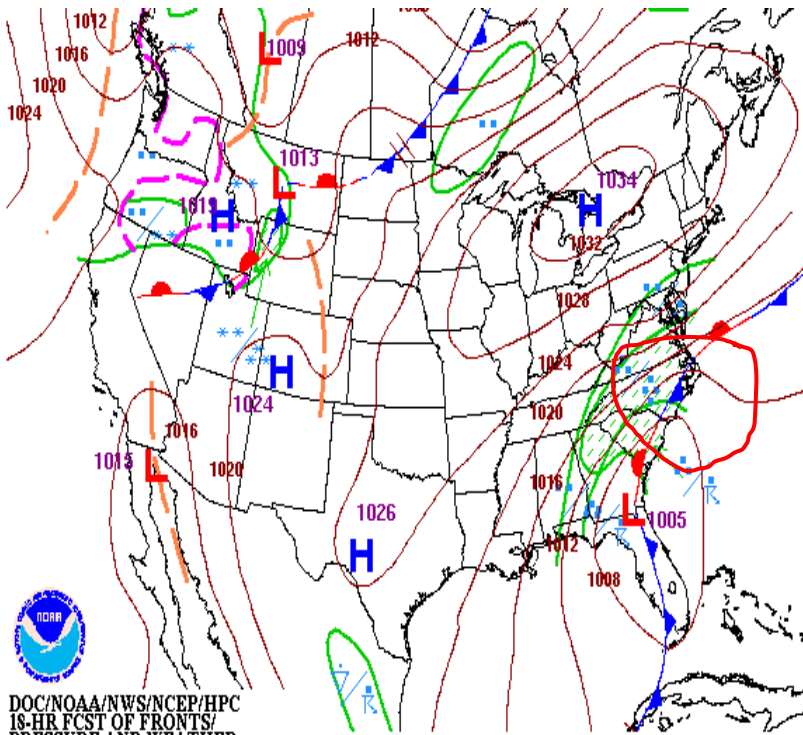
# Coastal Storm

- Remnants of Ida, coupled with strong high pressure to the north will produce strong winds, coastal flooding especially at times of high tide, and high surf through Friday.
- Storm total rainfall may reach 5-8" area-wide with the potential for localized fresh water flooding.

# Current Watches/ Warnings/ Advisories in Effect

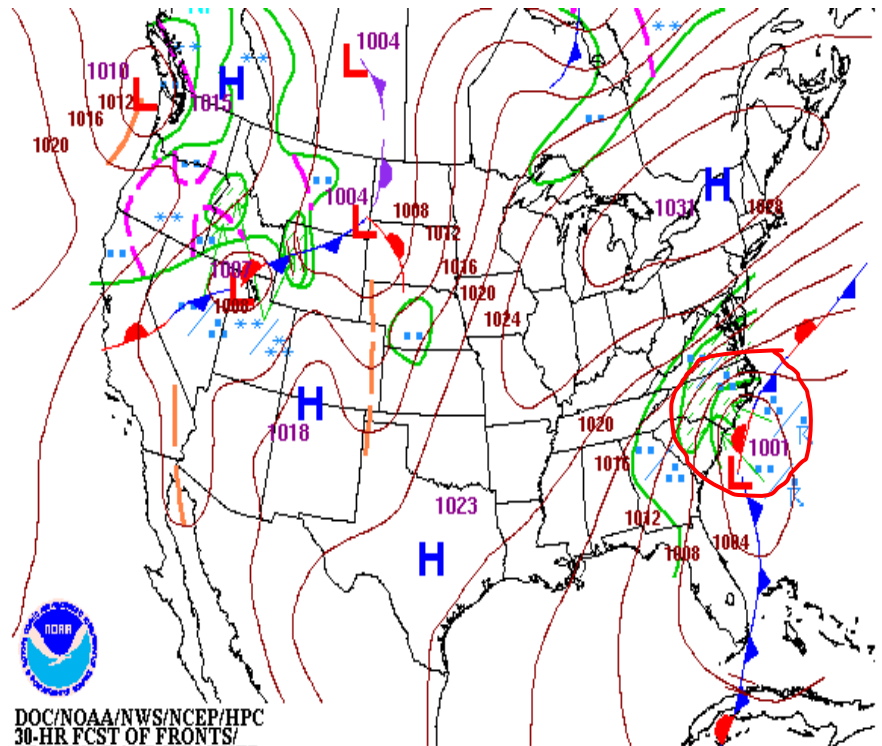
- Gale Warnings
- Coastal Flood Warning
- Flood Watch
- High Wind Warning
- Wind Advisory

# Storm Track



DOC/NOAA/NWS/NCEP/HPC  
18-HR FCST OF FRONTS/  
PRESSURE AND WEATHER  
ISSUED: 0352Z WED NOV 11 2009  
VALID: 1800Z WED NOV 11 2009  
FORECASTER: COLLINS

Today

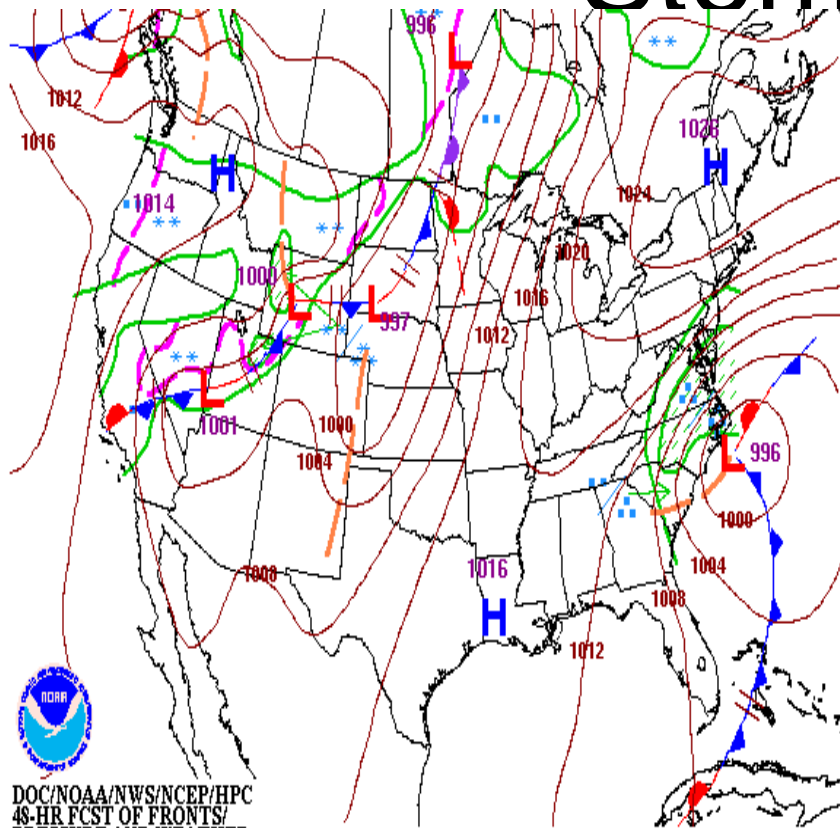


DOC/NOAA/NWS/NCEP/HPC  
30-HR FCST OF FRONTS/  
PRESSURE AND WEATHER  
ISSUED: 0657Z WED NOV 11 2009  
VALID: 0600Z THU NOV 12 2009  
FORECASTER: COLLINS

Tonight

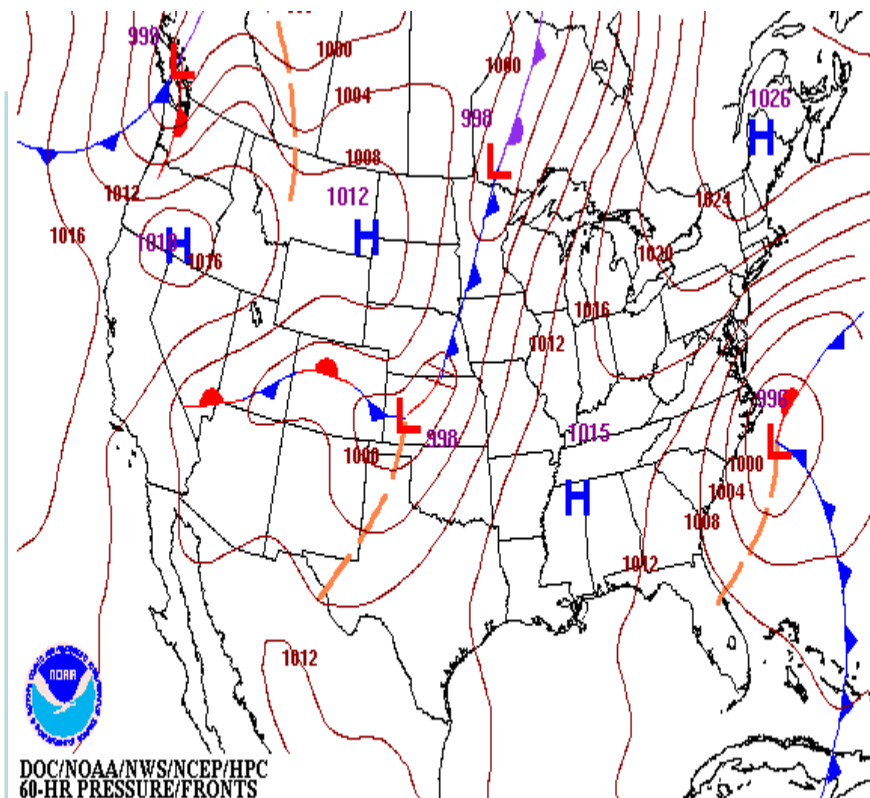
Remnants of Ida will move off the Georgia coast and into the W Atlantic today. Primary impact to area will be from rain ahead of the system becoming widespread and heavy at times.

# Storm Track



DOC/NOAA/NWS/NCEP/HPC  
48-HR FCST OF FRONTS/  
PRESSURE AND WEATHER  
ISSUED: 0657Z WED NOV 11 2009  
VALID: 0000Z FRI NOV 13 2009  
FORECASTER: COLLINS

Thursday Night

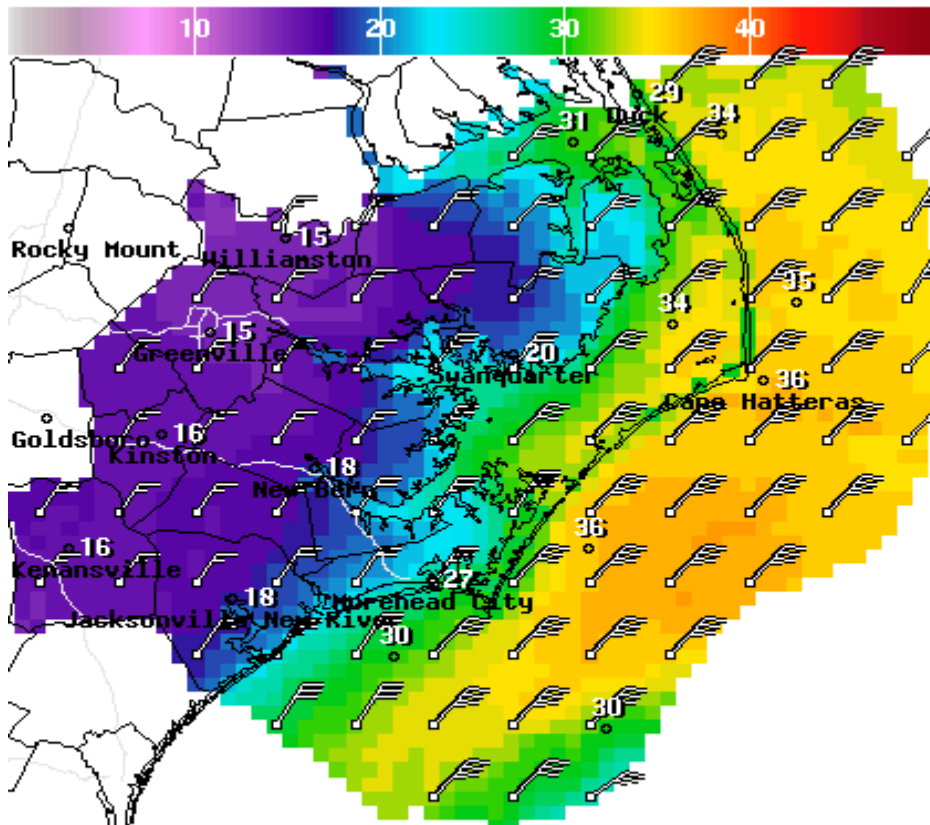


DOC/NOAA/NWS/NCEP/HPC  
60-HR PRESSURE/FRONT  
ISSUED: 0720Z WED NOV 11 2009  
VALID: 1200Z FRI NOV 13 2009  
FORECASTER: COLLINS

Friday Morning

The upper level trough will become a cutoff low, which will keep the storm off the southeast coast through the end of the week. This will compound the coastal flooding impacts and keep seas in the double digits entering into the weekend. Rain will continue Thursday into Friday, leading to saturated grounds and possible localized flooding concerns.

# Potential Coastal Storm



WindSpd(kts) & WindDir For Thu Nov 12 2009 7AM EST

(Thu Nov 12 2009 12Z)

NWS Newport/Morehead City, NC

Graphic Created Nov 10 5:34AM EST



GFS Forecast Winds Thursday Morning

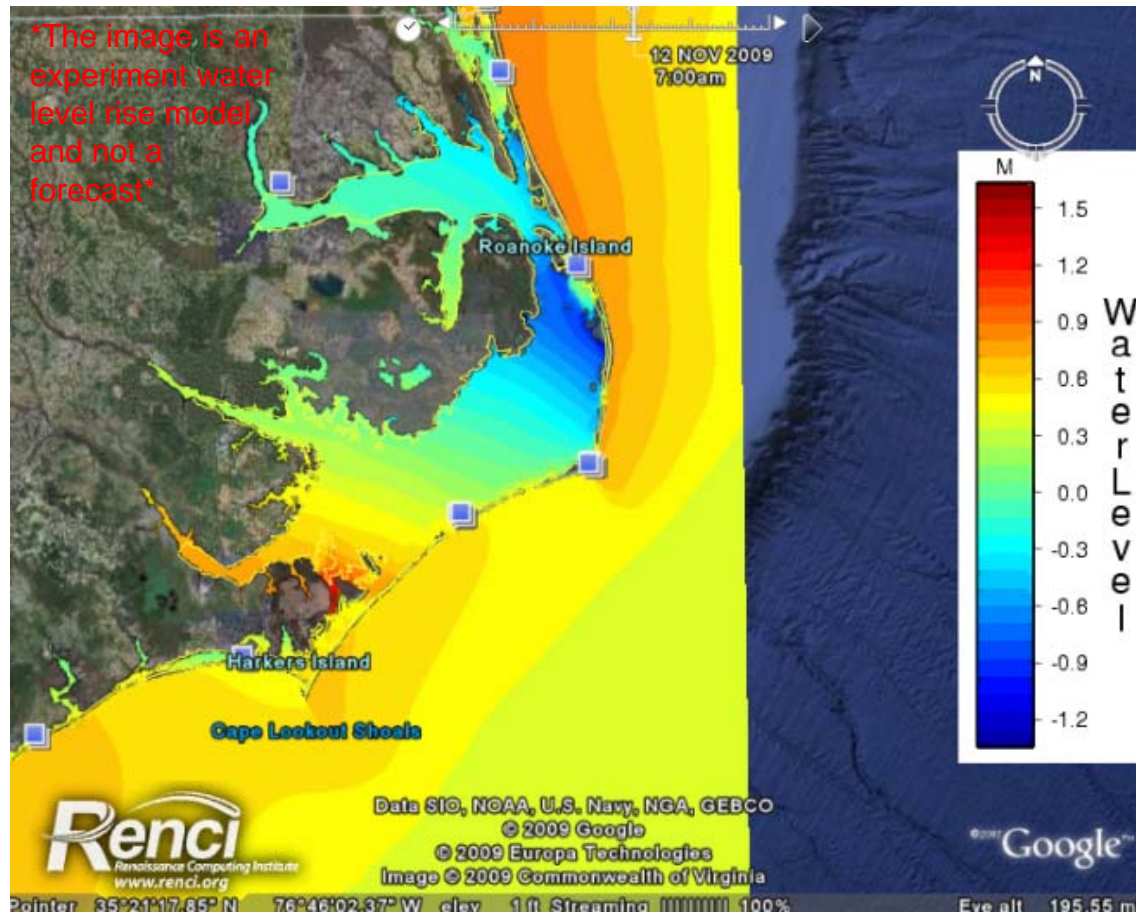
Winds will increase rapidly on today as the low strengthens offshore. By tonight speeds are expected to reach:

- 20-25 mph inland
- 25-30 mph from hwy 17 and east
- 30-35 mph near the coast and along the sounds (gusts to 45 mph possible)
- 35-45 kt along the coastal waters

The winds may fluctuate +/-10 mph through late Friday as the low meanders offshore.

Wind advisories and wind warnings may be posted as we get closer to the onset of the event.

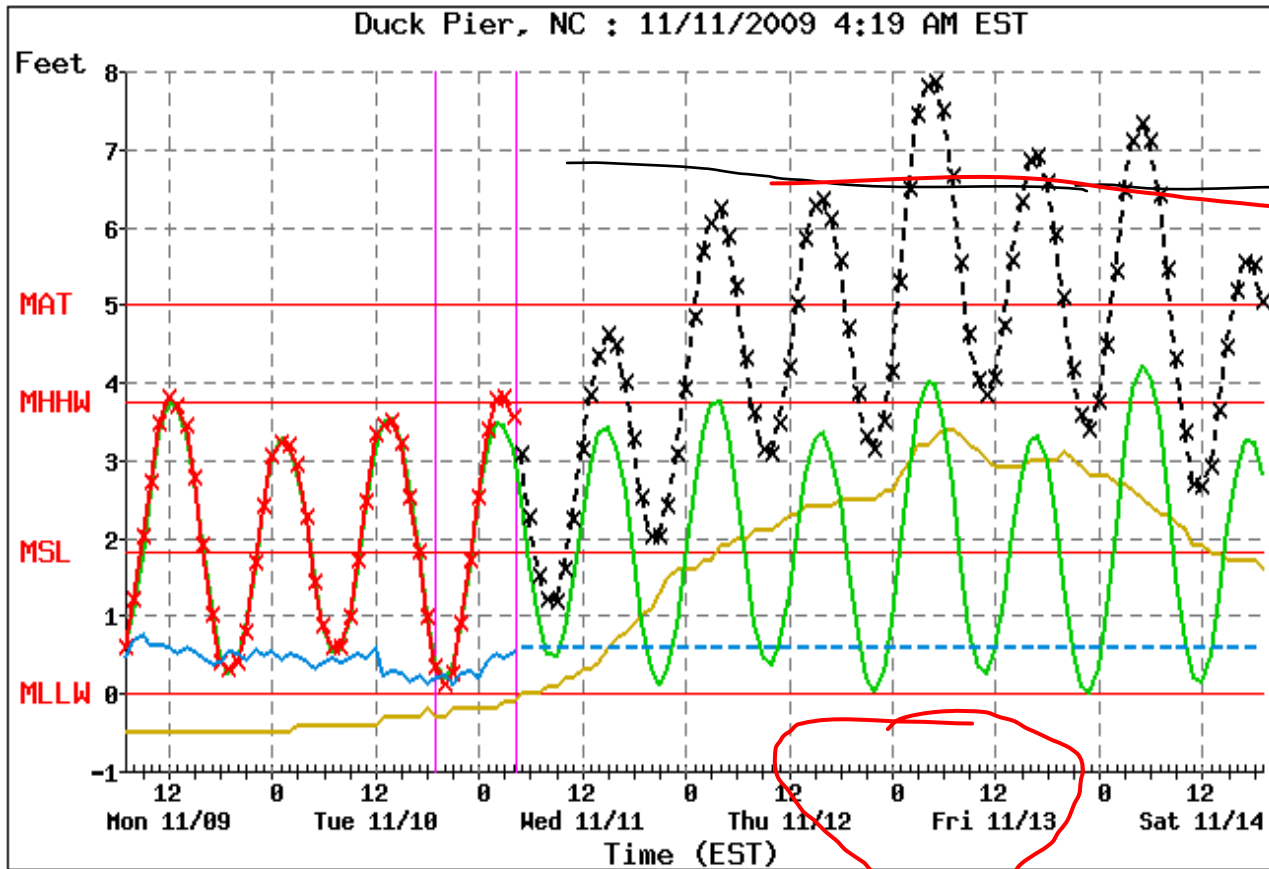
# Coastal Flooding



Water levels of 4-5 feet or more above normal can be expected late today into Fri along Downeast Carteret County, 3-4 feet in portions of Craven/Pamlico Counties. Along the OBX, along with high breaking waves and overwash, the extratropical storm surge will be 2 to 3 feet. Significant flooding along coastal sections from Hatteras North is possible. By Friday astronomical tides will begin to build again, which will add to the coastal flooding impacts.

# Extratropical Storm Surge Model

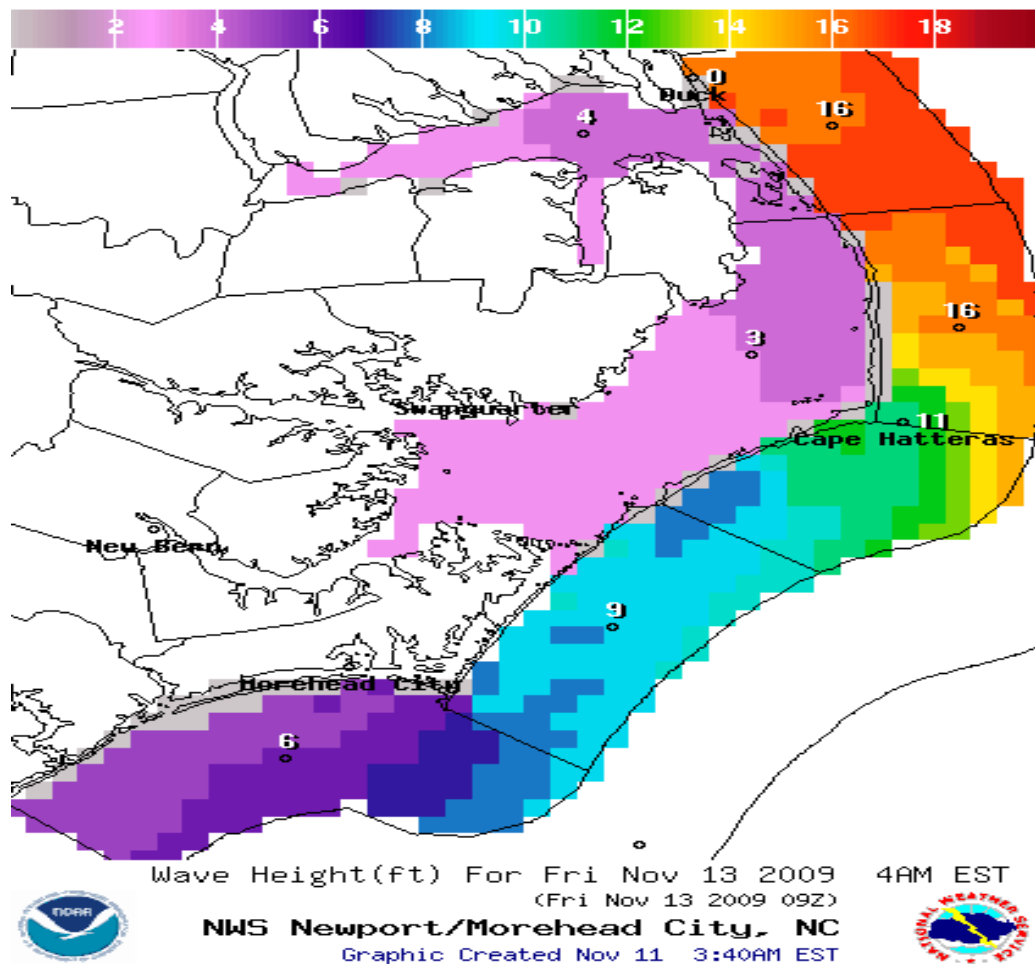
Surge Tide Observation Forecast  $Anomaly = (Obs. - (Tide + Surge))$



Flooding usually begins when levels reach between 6 and 7 feet.

Water level forecasts expected to rise to 3 feet above normal along the Northern Outer Banks through Saturday.

# Waves



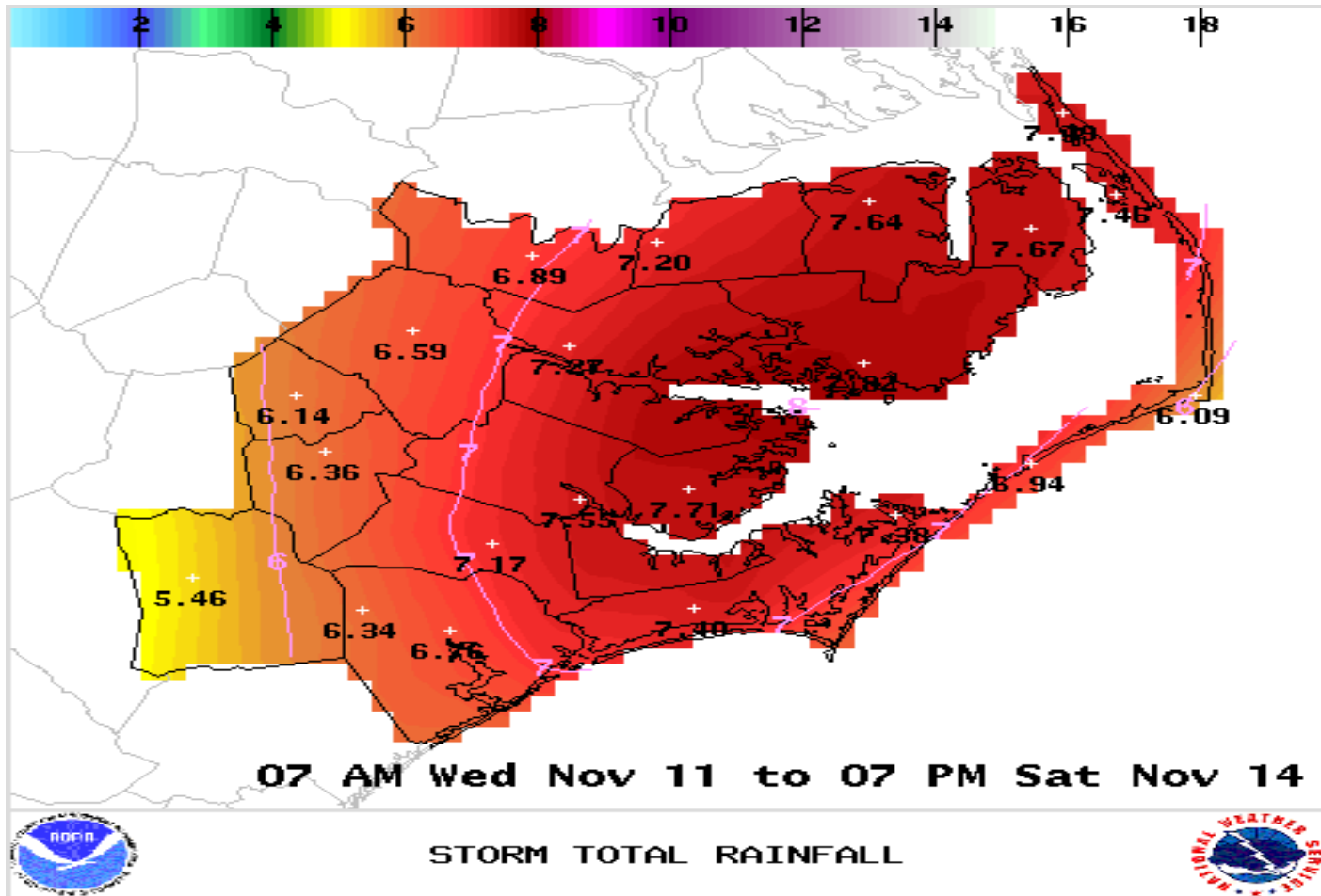
Seas are expected to build to 12-16 feet, highest along northern waters. The long northeast fetch from today through Friday afternoon will drive high seas towards the northern OBX.

Breakers could build as high as 12 feet generating high surf and dangerous rip currents.

By the weekend the low should dissipate as high pressure builds over the area and seas will begin to subside.

Wavewatch forecast seas by Friday morning (15-18 ft off OBX)

# Rainfall Totals



Rainfall Totals of 6 to 8 inches are possible through Saturday.

John Cole  
(252) 223-5122 x5  
[john.cole@noaa.gov](mailto:john.cole@noaa.gov)

Forecaster on Duty  
252-223-5122

### References

NWS Newport/Morehead City  
<http://www.erh.noaa.gov/mhx/>

Severe Weather Outlook  
<http://www.spc.noaa.gov/products/outlook/>

Rainfall Forecasts (QPF)  
<http://www.hpc.ncep.noaa.gov/qpf/qpf2.shtml>